



# Mazarick Park Connections Study

*June 22, 2023*

**FAYETTEVILLE**  
PARKS & RECREATION  
**CUMBERLAND CO.**

 **FAYETTEVILLE** <sup>N</sup>C

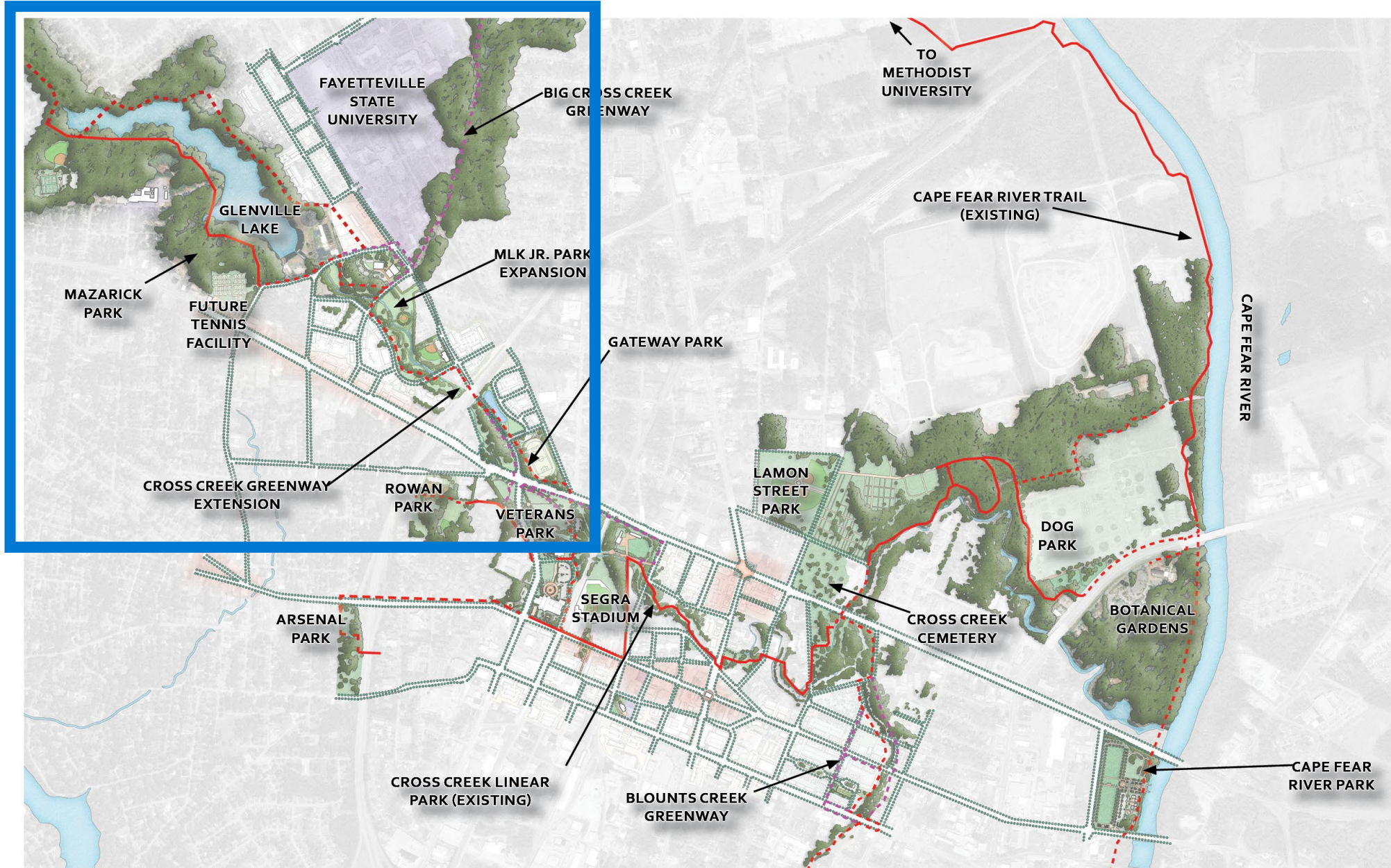
# Meeting Purpose

- Provide input on:
  - **Ways to improve connections to Mazarick Park from the Murchison Road Corridor** and surrounding neighborhoods
  - **Park improvement priorities** in the area (Mazarick Park to Downtown)





# Study Area





# Background

- 2016 Parks and Recreation Bond - \$35 Million
  - Splashpads at Kiwanis, Myers, Massey Hill, and Gilmore Rec. Center
  - Improvements to Massey Hill Rec Center, Clark Park, Seabrook Pool, Segra Stadium, Jordan Soccer Complex
  - Skate park at Rowan Park
  - Bill Crisp Senior Center
- Ongoing
  - Senior Center East
  - Tennis Center at Mazarick Park
  - Sports Field Complex (I295 and McArthur Rd)
  - Cape Fear River Park







Adopted December 2020 | Revised May 2022

## VISION

*Create a world-class Center City Parks and Trails system of interconnected parks, greenspace and greenways linking public spaces and attractions, and providing a destination for visitors and residents in greater downtown Fayetteville.*



# Key Connections



**Mazarick Park**



**Fayetteville State University**



**MLK Park**



**Downtown / Hay Street**



**Harry F. Shaw Cross Creek Linear Park**



**Veterans Park**



# Key Connections



## Update Pics





# Tennis Center

- Facility Highlights
  - 11 Hard Courts
  - Includes 1 Competition Court
  - 4 Clay Courts
  - 4 Pickleball Courts
  - Mazarick Park Trail Connectivity
  - 6594 Sq. Ft. Clubhouse
  - Locker Rooms & Showers
  - Pro Shop
  - Learning Center





# Tennis Center Site Location





# Tennis Center Renderings





# Senior Center East

- Planned Amenities
  - Dance/Fitness Room
  - Kitchen/Café
  - Library & Lounge
  - Multipurpose Rooms
  - Warm water pool



# Fayetteville State University

COMMERCIAL REAL ESTATE

## FSU announces new Chick-fil-A, new Starbucks and new name for Bronco Square

BY STEPHANIE MEADOR, POSTED 8 MONTHS AGO

[Like 1](#) [Share](#) [Share](#) [Tweet](#)



Photo provided by GFBJ

Today, Fayetteville State University held a groundbreaking ceremony for a new Chick-fil-A that will be built in what was formerly known as Bronco Square but as of today will be known as Bronco MidTown. Additionally, FSU Chancellor Darrell T. Allison, J.D. announced that there will be a new Starbucks built on campus. The restaurants anticipate opening between late 2023 and early 2024.

“This is an extraordinary moment for our university, our city, county and region,” said Chancellor Allison in a press release. “These new enterprises are much more than popular

restaurants — they are significant investments in our local economy that will create new employment and revenue opportunities, offer welcoming and vibrant gathering places for families, and further





# Connections to Mazarick Park

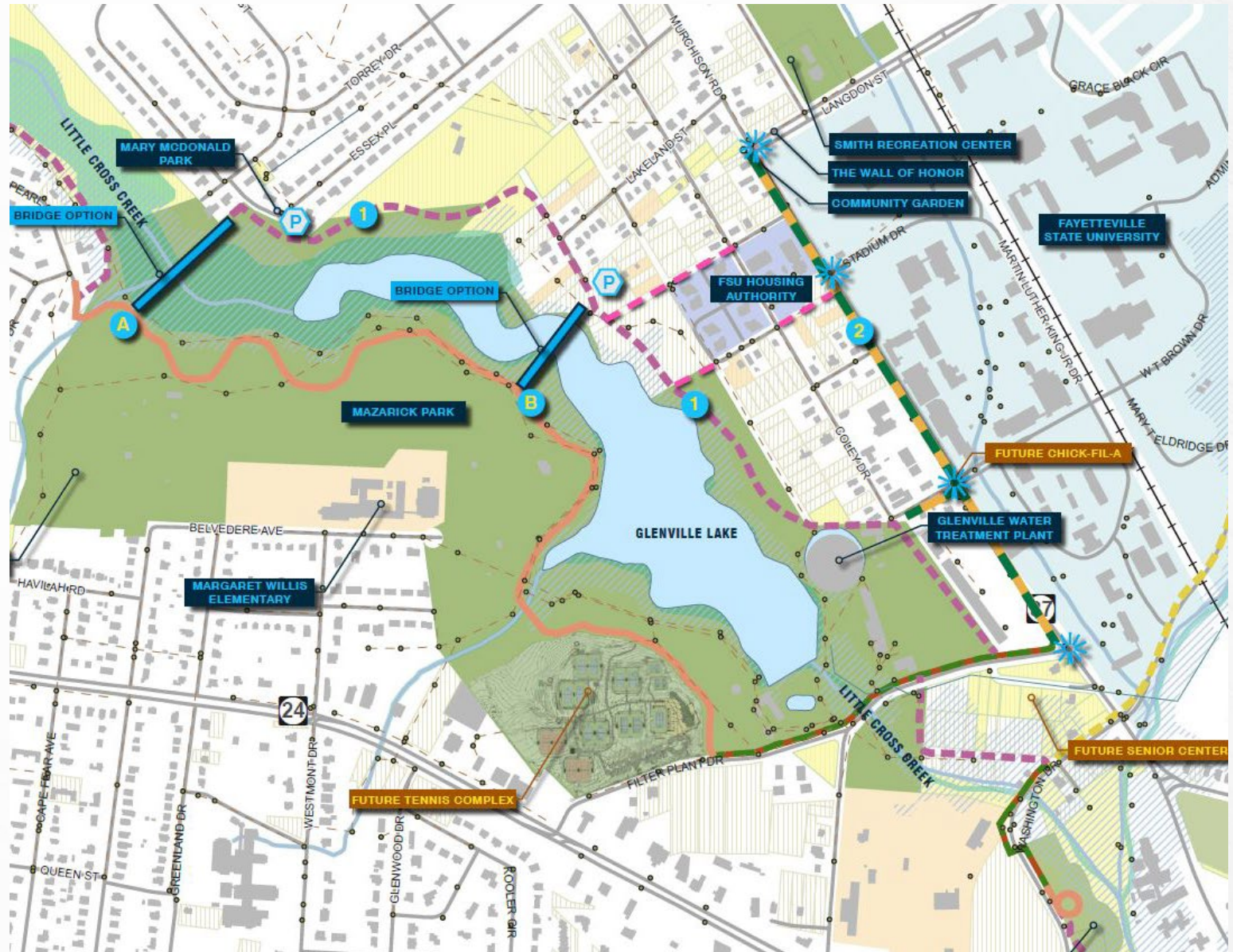
- From neighborhoods
- From Murchison Road
- From FSU
- To new Senior Center Site
- To Downtown





# Three Main Options

1. Bridge near Essex Place
2. Bridge near Council Street and Kornbow Street
3. Improved Path Along Filter Plant Rd (Bronco Village Way)





# Connections Types



*Urban Trail*



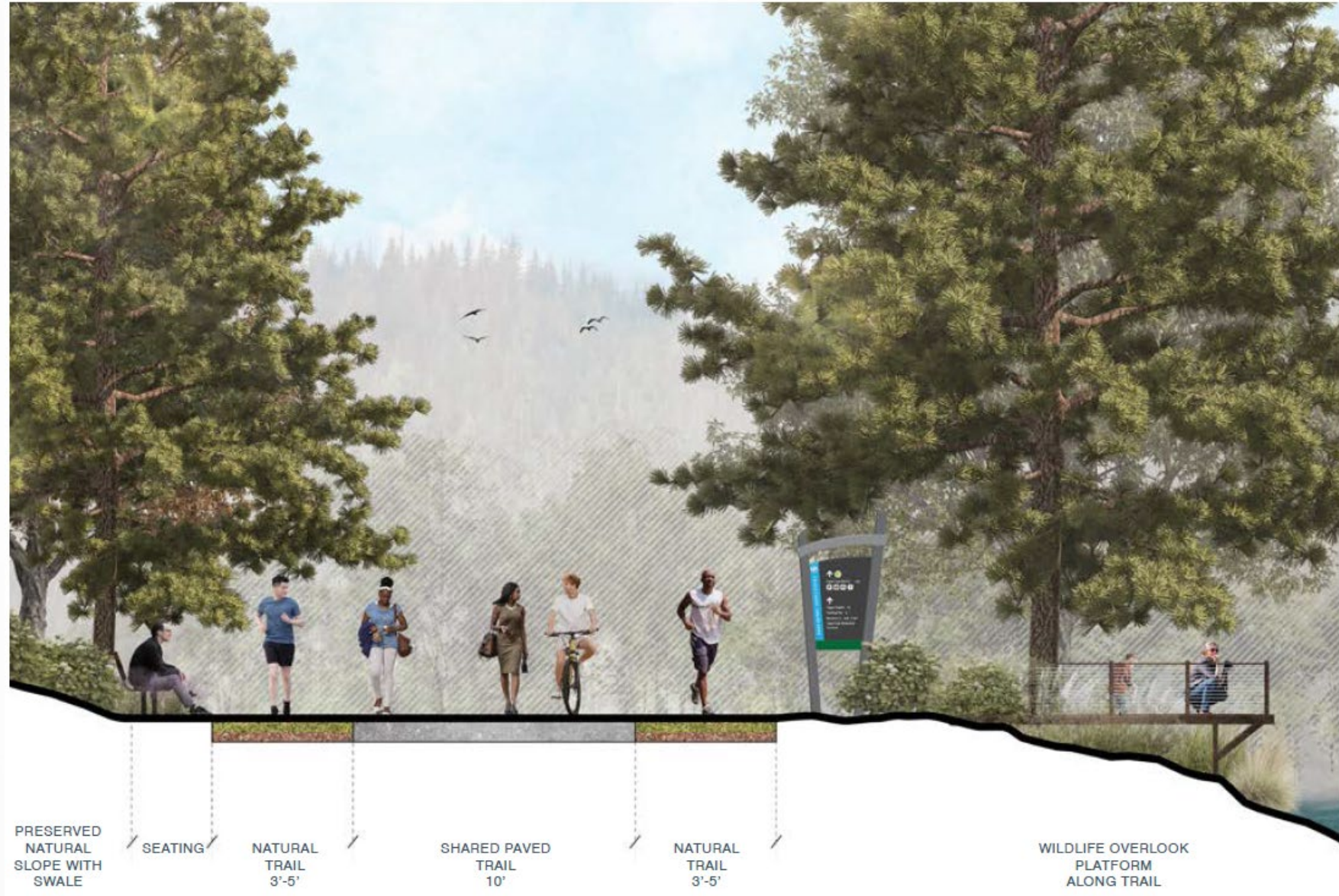
*Greenway*



*Natural Surface Path*



# East Shore Trail Concept





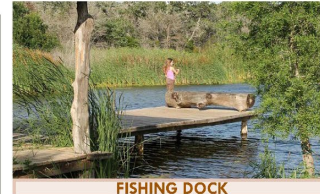
# Park Improvement Priorities

## TRAIL PROGRAMMING PREFERENCE - ACTIVE AMENITIES



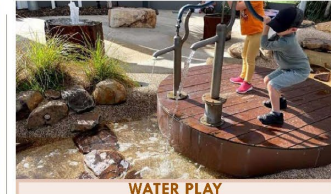
KAYAKING

↑ VOTE HERE ↓



FISHING DOCK

↑ VOTE HERE ↓



WATER PLAY

↑ VOTE HERE ↓



PADDLE BOATS

↑ VOTE HERE ↓



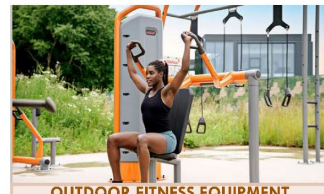
DOG PARK

↑ VOTE HERE ↓



NATURAL PLAY

↑ VOTE HERE ↓



OUTDOOR FITNESS EQUIPMENT

↑ VOTE HERE ↓



GREENWAY CONNECTIONS

↑ VOTE HERE ↓



TRADITIONAL PLAY EQUIPMENT

↑ VOTE HERE ↓



COMMUNITY CENTER

↑ VOTE HERE ↓



TRAIL HEAD

↑ VOTE HERE ↓



EMBANKMENT SLIDES / CLIMBING

↑ VOTE HERE ↓



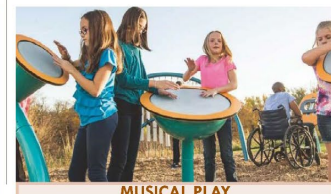
DISC GOLF

↑ VOTE HERE ↓



VIEWING PLATFORMS

↑ VOTE HERE ↓



MUSICAL PLAY

↑ VOTE HERE ↓



# Safety

- Clear zone on either side of trail.
- Lighting at key locations (lamp posts at trailheads and bridge)
- Call boxes or emergency kiosks





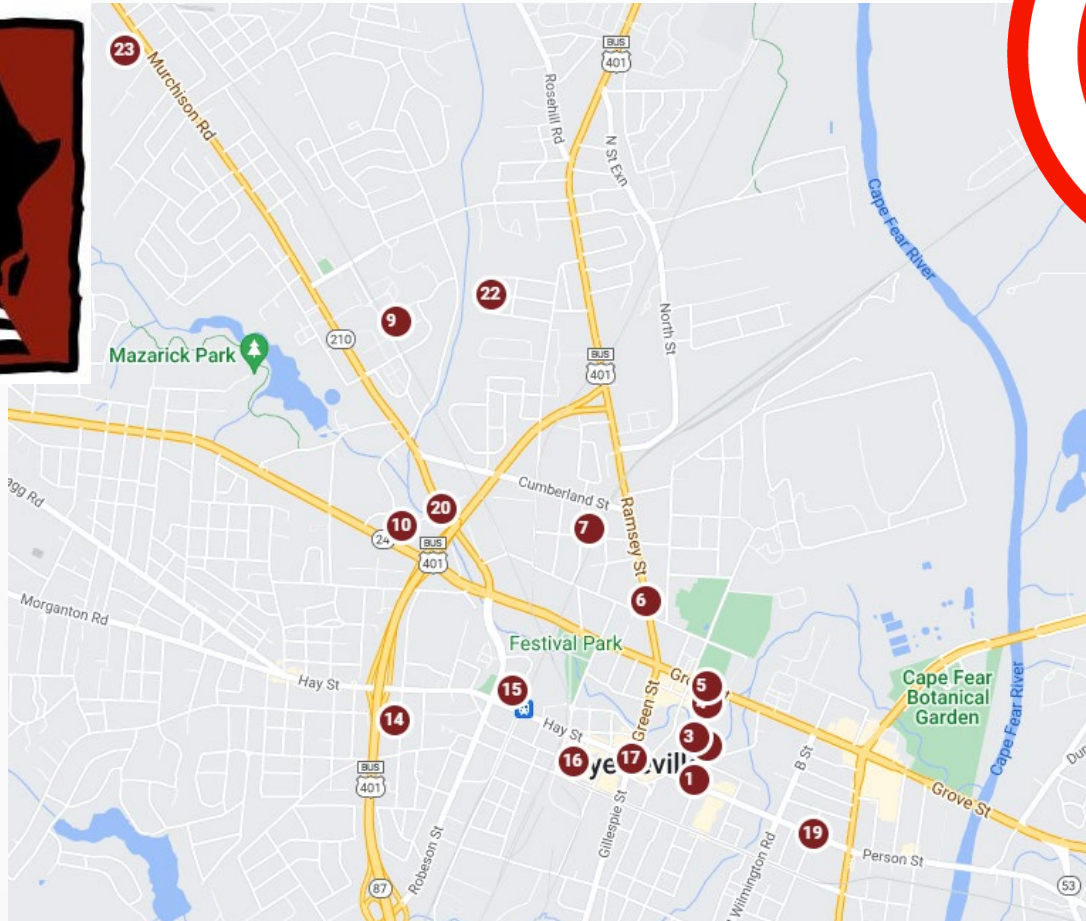
# Wayfinding and Signage

Goal is easy to navigate, connected system of parks, greenways and cultural sites.





# Heritage Trail



Senior Center East



Martin Luther King Jr. Park



Orange Street School Connector



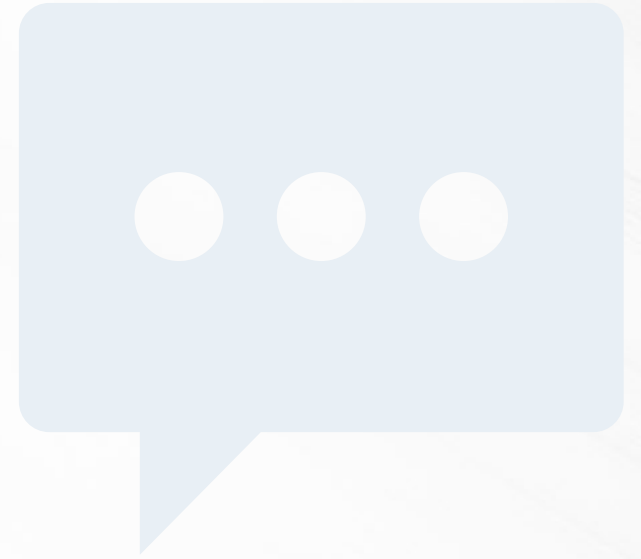
Downtown District





# What we need tonight

- INPUT!
- Ideas
- Priorities
- Safety concerns





# Next Steps

- Finalize recommendations/projects
- Coordination with FSU and other partners
- Flood study for bridge crossing
- Design and construction of priority projects





# Contacts

Jessica Howell  
*[jessicahowell@fayettevillenc.gov](mailto:jessicahowell@fayettevillenc.gov)*  
*910.433.1391*

Anthony Ramsey  
*[anthonyramsey@fayettevillenc.gov](mailto:anthonyramsey@fayettevillenc.gov)*  
*910.988.6874*



[FayettevilleNC.gov](http://FayettevilleNC.gov)